



ROCKY MOUNTAIN **ELEVATOR PRODUCTS** LIVE LIFE ELEVATED

ELEVATIONS RESIDENTIAL ELEVATOR
TRANSCEND SERIES



2021-2022

BLUE MESA LAKE, COLORADO

ELEVATORS FOR THE DISTINCTIVE HOME

WHO ARE WE?

SURROUNDED BY THE SCENIC HIGH DESERTS AND SCENIC MOUNTAINS OF WESTERN COLORADO, ROCKY MOUNTAIN ELEVATOR PRODUCTS IS A SMALL COMPANY STRIVING TO MAKE BIG CHANGES IN THE HOME ELEVATOR INDUSTRY. WITH INNOVATIONS SUCH AS THE WRAP AROUND GATE 3/4" DOOR FRAME DESIGNED TO MEET THE NEW 2016 SAFETY STANDARDS, A ZERO CLEARANCE DOOR FRAME, EASY TO ASSEMBLE CAB DESIGN AND A FOCUS ON SAFETY WITH EASE OF SERVICE AND TROUBLESHOOTING. WE PROVIDE THE CUSTOM DESIGNS YOU WANT WHILE ALSO STRIVING TO MAKE AFFORDABLE OPTIONS THAT HAVE THE LOOK OF HIGH END CUSTOM DESIGNS.



ROCKY MOUNTAIN ELEVATOR PRODUCTS HEADQUARTERS. GRAND JUNCTION, COLORADO

LET OUR TRANSCEND BROCHURE INSPIRE THE POSSIBILITIES OF YOUR CUSTOM CAB DESIGN.



INTERIOR COVER: EARLY 1900'S ELEVATOR CONTROLLER
PHOTO BY: JOHNATHAN KAZMEIRCZAK

ELEVATOR PAT
OWNED B
ELEVA
COMPANY

1,127,364
1,132,755
1,159,587
1,162,788
RE-15,733
1,162,283
1,199,174
1,206,448
1,245,194
1,248,512
1,248,516
1,255,441
1,264,592
1,268,109
1,268,111
1,268,114
RE-15,125
1,291,561
1,298,066
1,309,641
1,317,788
1,324,358
1,330,860
1,333,240
1,364,369
1,369,094
1,382,243
1,399,560
1,399,605
1,416,089
1,452,490
1,458,425
1,479,615
1,495,420
1,499,385
RE-16,297
1,511,083
1,513,531
1,515,209
1,545,164
1,547,306
1,555,055
1,566,366
1,566,385

TRANSCEND CAN PROVIDE 3D DESIGN, TAKING YOU FROM CONCEPT TO REALITY:

WHETHER YOU ARE LOOKING FOR THE BASIC CAB OFFERINGS OF OUR BUILDER SERIES OR THAT ONE OF A KIND CUSTOM CAB FROM OUR TRANSCEND SERIES, RMEP CAN TAKE CARE OF YOU. RMEP OFFERS MORE CUSTOM OPTIONS THAN ANY OTHER MANUFACTURER IN THE INDUSTRY.



AT ROCKY MOUNTAIN ELEVATOR PRODUCTS LLC IT IS OUR MISSION TO IMPROVE SAFETY AND CUSTOMER EXPERIENCE BY PROVIDING A SUPERIOR LEVEL OF DESIGN AND INNOVATION. WE ASPIRE TO CREATE INDUSTRY-WIDE CHANGE BY SETTING A HIGHER LEVEL OF EXCELLENCE AND ALWAYS EXCEEDING CUSTOMER EXPECTATIONS.

FROM 3D CONCEPT



TO REALITY!

ROCKY MOUNTAIN
ELEVATOR PRODUCTS
LIVE LIFE ELEVATED

ROCKY MOUNTAIN
ELEVATOR PRODUCTS



BACKGROUND: GRAND MESA NATIONAL FOREST
JOHNATHAN KAZMIERCZAK

DRIVE SYSTEM OVERVIEW

ROCKY MOUNTAIN ELEVATOR PRODUCTS OFFERS YOU THE CHOICE OF TWO CONFIGURATIONS IN BOTH THE ROPED HYDRAULIC AND WINDING DRUM, GIVING YOU THE FLEXIBILITY TO SELECT THE BEST DRIVE SYSTEM FOR YOUR APPLICATION.

ROPED HYDRAULIC:

- ✓ 1:2 ROPED HYDRAULIC UNIT UTILIZING TWO (2) 3/8" WIRE ROPES RUNNING OVER A SHEAVE MOUNTED ATOP A 70 OR 80MM DIAMETER HYDRAULIC CYLINDER
- ✓ 950 LBS. CAPACITY (750 LBS. OPTIONAL)
- ✓ SMOOTH RIDE TECHNOLOGY USING THE INDUSTRY'S ONLY SELF-ADJUSTING RIDE
- ✓ MRLH - MACHINE ROOM-LESS HYDRAULIC (FIGURE A) OR REMOTE MACHINE ROOM UP TO 40' AWAY (FIGURE B)
- ✓ SUBMERGED MOTOR FOR QUIET OPERATION
- ✓ FLOOR SPECIFIC BATTERY DESCENT, STANDARD
- ✓ 40 FPM TRAVEL SPEED (INCREASED SPEED REQUIRES A VARIANCE)
- ✓ SLACK CABLE SAFETY DEVICE
- ✓ 230 V 1PHASE 30 AMP WITH NEUTRAL AND GROUND (4 WIRES)

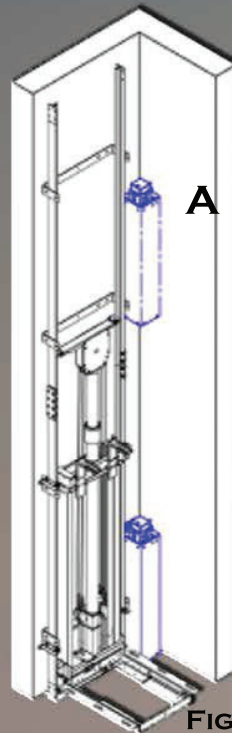


FIGURE A

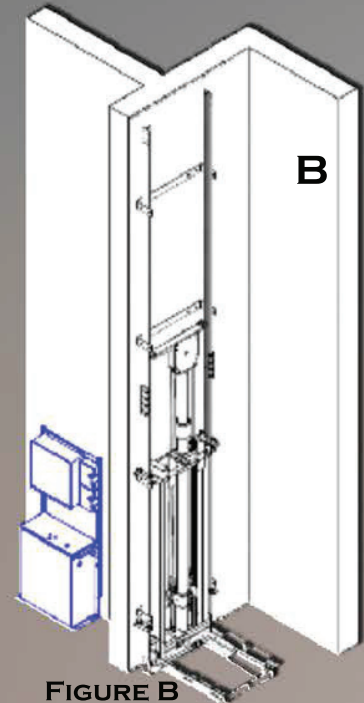


FIGURE B

WINDING DRUM:

- ✓ INVERTER CONTROLLED VARIABLE SPEED WINDING DRUM UNIT UTILIZING TWO (2) 3/8" STEEL CORE WIRE ROPES AS SUSPENSION MEANS
- ✓ 950 LBS. CAPACITY STANDARD.
- ✓ MRLD - MACHINE ROOM-LESS DRUM (REQUIRES OVERHEAD ACCESS) (FIGURE A)
- ✓ STANDARD DRUM BEHIND THE RAIL (FIGURE B)
- ✓ VARIABLE SPEED FOR A QUALITY RIDE
- ✓ FLOOR SPECIFIC BATTERY DESCENT (OPTIONAL)
- ✓ 40 FPM TRAVEL SPEED
- ✓ 230V 1 PHASE 30 AMP WITH NEUTRAL AND GROUND (4 WIRES)
- ✓ SLACK CABLE SAFETY DEVICE

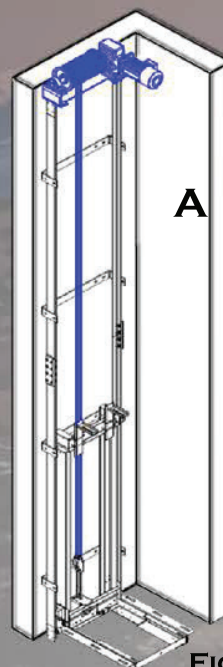


FIGURE A

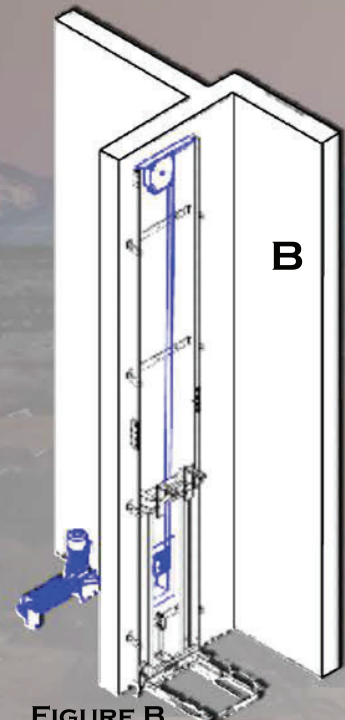


FIGURE B

ROCKY MOUNTAIN
ELEVATOR PRODUCTS
LIVE LIFE ELEVATED

ROCKY MOUNTAIN
ELEVATOR PRODUCTS



2016 COMPLIANCE

RMEP DESIGNS A FULLY CODE COMPLAINT ELEVATOR PER THE ASME ANSI A17.1(2016) NATIONAL SAFETY CODE FOR ELEVATORS- SECTION 5.3 PRIVATE RESIDENCES ELEVATORS AS MODIFIED BY VARIOUS STATES.

5.3.7.2 OF THE ABOVE REFERENCED CODE: CLEARANCE BETWEEN THE HOIST-WAY DOORS OR GATES AND THE LANDINGS SILLS AND CAR DOORS OR GATES EFFECTIVE MAY 2016.

CLEARANCE REQUIREMENTS WITHIN A PRIVATE RESIDENCE STATE: THE CLEARANCE BETWEEN THE HOIST-WAY DOORS OR GATES AND THE HOIST-WAY FACE OF THE LANDING DOOR OR GATE AND THE CAR DOOR OR GATE SHALL NOT EXCEED $\frac{3}{4}$ " (0.75 INCHES). THE DISTANCE BETWEEN THE HOIST-WAY FACE OF THE LANDING DOOR OR GATE AND THE CAT DOOR OR GATE SHALL NOT EXCEED 4" (INCHES).

ROCKY MOUNTAIN ELEVATOR PRODUCTS TAKES PRIDE IN BEING THE SAFETY LEADER WITH DEVELOPING OUR $\frac{3}{4}$ " CLEARANCE DOOR FRAME AND WRAP AROUND GATE SYSTEMS. DEVELOPING SAFER SYSTEMS HAS BEEN THE MAIN FOCUS OF RMEP SINCE ITS FOUNDING.

ROCKY MOUNTAIN
ELEVATOR PRODUCTS
LIVE LIFE ELEVATED



OLDER CODE COMPLIANT SYSTEMS ALLOWED FOR A SIGNIFICANT GAP THAT ALLOWED FOR ENTRAPMENT IN SOME SITUATIONS. RMEP WORKED TO ELIMINATE THIS WITH OUR $\frac{3}{4}$ " DOOR FRAME AND WRAP AROUND GATE.

RMEP'S PATENTED DESIGN FOR A $\frac{3}{4}$ " METAL DOOR FRAME, SMARTLOCK SERIES AND WRAP GATE ELIMINATES THE GAP THAT CAN RESULT IN ENTRAPMENT. NO OTHER COMPANIES PRODUCTS MATCH THE QUALITY, FUNCTION AND SAFETY THAT RMEP PROVIDES. THE ABILITY TO CUSTOMIZE THE PRODUCTS TO THE LOOK OF YOUR HOME IS SECONDARY TO SAFETY BUT IMPORTANT TO RMEP. THE ABILITY TO CUSTOMIZE THESE PRODUCTS TO YOUR HOMES STYLE HAS CHANGED THE HOME ELEVATOR FROM BEING HIDDEN AS A CLOSET TO BEING A CELEBRATED FIXTURE IN YOUR HOME AS MUCH AS A WELL DECORATED LIVING ROOM.

CHECK OUT THESE CODE COMPLIANT PRODUCTS IN THE NEXT FEW PAGES.



3/4" METAL DOOR FRAME



PATENTED DESIGN OF THE RMEP 3/4" DOOR FRAME ALLOWS FOR EASY INSTALLATION OF THE FRAME, LOCK, AND DOOR. INSTALLATION FROM INSIDE THE HOISTWAY CAN PROVIDE A NEAR FLUSH INSTALLATION (1/16") WITH THE HOISTWAY INTERIOR WALL. THIS WILL REPLACE THE BULKY INTERIOR TRIM AND CAN BE PAINTED TO MATCH THE HOISTWAY, OR THE WOOD GRAIN TRIM THAT IT REPLACES.

THE EXTERIOR CAN BE PAINTED OR TRIMMED WITH THE SAME WOOD AS THE OTHER DOORS IN YOUR HOME.

- LEFT OR RIGHT HAND OPENING.
- RECESSED HINGE MOUNTS MANUFACTURED INTO THE DOOR FRAME.
- ROLLER CATCH, HINGE, AND DOOR PULL FINISH OPTIONS; BRUSHED NICKLE, BRUSHED BRASS AND OIL RUBBED BRONZE.
- SMARTLOCK AND HONEYWELL RDI COMPATIBILITY.
- FINISH FRAME WITH PAINT OR TRIM.
- CUSTOM SIZES AVAILABLE.

FRAME COMES IN "PAINT LOCK" GREY, CAN BE PAINTED OR TRIMMED TO MATCH ANY PATTERN OR STYLE.



ROCKY MOUNTAIN
ELEVATOR PRODUCTS
LIVE LIFE ELEVATED

ROCKY MOUNTAIN
ELEVATOR PRODUCTS



WOOD FRAMED 3/4" SETBACK LOCK



ORB SETBACK KIT,
HALL SIDE



ORB SETBACK KIT
HOIST-WAY SIDE,
WITH A WHITE SMARTLOCK

ORB SETBACK KIT
WITH A WHITE
SMARTLOCK



RMEP 3/4" SETBACK LOCK ALLOWS FOR CODE COMPLIANCE WHILE MAINTAINING THE SAFETY AND SECURITY OF THE SMARTLOCK SERIES OF LOCKS. THERE IS NO INTRUSION INTO THE HOIST-WAY. THE KEEPER PLATE COMES IN STAINLESS, WHITE AND OIL RUBBED BRONZE.



WHITE SETBACK KIT WITH WHITE SMARTLOCK

THE SETBACK LOCK ALLOWS FOR A 3/4" CLEARANCE FROM THE BACK OF THE DOOR TO THE FACE OF THE HOIST-WAY IN COMPLIANCE WITH A17.1 (2016) CODE.

THE UNIT ALLOWS FOR A STANDARD SOLID WOOD OR METAL DOOR TO BE USED. A CUTOUT IN THE DOOR ALLOWS ROOM FOR THE LOCK TO RECESS INTO THE DOOR WHILE PROVIDING ACCESS TO THE EMERGENCY RELEASE AND EASE OF SERVICE.

THE KEEPER PLATE AND THE REAR BACKING PLATE COME IN STAINLESS, ORB, WHITE AND PAINT LOCK (PRIMER).

THE SMARTLOCK COMES IN STAINLESS, ORB, AND WHITE.

ROCKY MOUNTAIN
ELEVATOR PRODUCTS
LIVE LIFE ELEVATED



HARDWOOD

SHAKER



RED OAK CLEAR*

RAISED PANEL



WHITE OAK GOLDEN**

RECESSED PANEL



RED OAK AMERICAN***

*STANDARD TWO LIGHT SHOWN
 **SINGLE TRAY TWO LIGHT OPTION
 ***FOUR TRAY FOUR LIGHT OPTION

WALNUT ALDER MAPLE CHERRY MAHOGANY



NOTHING BEATS HARDWOOD IN BEAUTY, QUALITY AND DURABILITY.

UPGRADE TO HARDWOOD AND HAVE THE SAME DURABILITY AND BEAUTY THAT YOU HAVE PUT INTO YOUR HOME. THREE STYLES THAT REFLECT WHERE YOU LIVE AND HOW YOU LIVE:

*SHAKER; SIMPLE AND BEAUTIFUL; FLAT HARDWOOD PANELS FRAMED WITH HARDWOOD BOARDS IN THE STYLE OF THE EARLY PIONEERS.

**RAISED; THE CLASSIC LOOK OF RAISED PANELS CALL BACK TO THE ORNATE AND LUXURIOUS VICTORIAN ERA.

*RECESSED; THE DISTINCTIVE CROWN MOULDING FRAMES THE BEAUTIFUL BEVELED NATURAL WOOD GRAINED PANELS.

ALL OF OUR CABS ARE HANDMADE FROM RAW LUMBER AND ARE ASSEMBLED AND FINISHED AT THE FACTORY BEFORE BEING DIS-ASSEMBLED FOR SHIPPING TO ENSURE FIT AND FINISH.

STAIN OPTIONS

RED OAK
 CLEAR



AMERICAN NATURAL



GOLDEN



WHITE OAK

CLEAR



AMERICAN NATURAL



GOLDEN



BIRCH

CLEAR



AMERICAN NATURAL



GOLDEN



MODERN DESIGN

FOR THOSE WHO DESIRE A MODERN CLEAN LOOK, DESIGNER LAMINATES ARE NOT ONLY INTERESTING TO LOOK AT BUT OFFER A RAISED GRAIN SURFACE FOR ADDITIONAL TEXTURE AND AESTHETICS.

DESIGNER LAMINATE OPTIONS



BAMBOO



CHERRY



EBONY



WHITE PINE



MIDNIGHT ECHO



TEAK



ACCENT INLAYS

AVAILABLE IN HALF AND FULL WALL

- RMEP OFFERS A VARIETY OF INLAY PANELS; GLASS, ACRYLIC, MIRROR, FAUX WROUGHT IRON, WIRE MESH, AND COPPERLEAF.
- A HALF WALL INLAY WITH A RAISED WOOD PANEL AND GLASS OR MESH CREATES A CLASSIC LOOK.
- FAUX WROUGHT IRON PANELS ADD AMBIANCE TO YOUR HOME. CUSTOMIZABLE DESIGNS CAN FEATURE YOUR FAMILY CREST, COMPANY LOGO OR SIMPLE LINE ART IMAGES. WROUGHT IRON PANELS ARE SET IN CLEAR OR FROSTED GLASS.

AVAILABLE IN MANY DIFFERENT
COLORS AND STYLES

*CLEAR OR FROSTED GLASS



ROCKY MOUNTAIN

ELEVATOR PRODUCTS

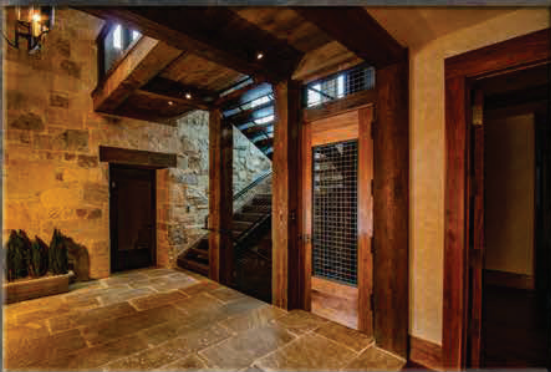
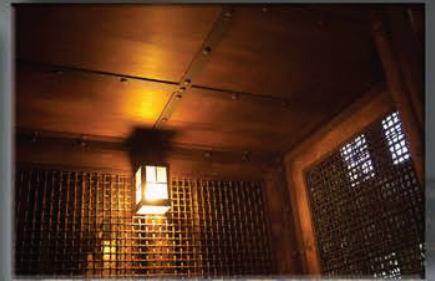
LIVE LIFE ELEVATED



RUSTIC MESH AND WOOD CABS



CABS CAN BE DESIGNED TO MATCH YOUR HOME AND PERSONAL STYLE. EVERY UNIQUE CAB IS DESIGNED TO FIT PROPERLY IN YOUR HOISTWAY, HANDCRAFTED FOR A UNIQUE QUALITY LOOK & FEEL.



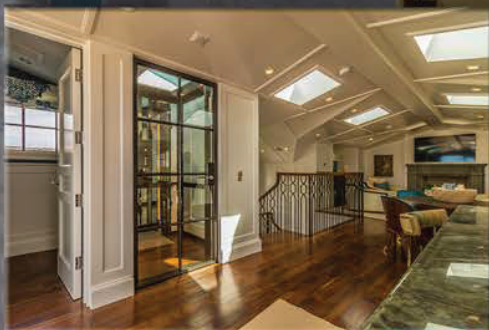
ROCKY MOUNTAIN
ELEVATOR PRODUCTS
LIVE LIFE ELE



GLASS

WHEN IT'S ALL ABOUT THE VIEW.

GLASS CABS ARE THE TOP OF THE INDUSTRY FOR CLASS AND STYLE. WHY HIDE AN ELEVATOR WHEN IT CAN BECOME AN IMPORTANT PART OF YOUR HOME DESIGN? MIX GLASS AND WOOD FOR A WINDOW FRAME EFFECT AND CREATE A VERY STYLISH CAB.



GLASS & WOOD



ROCKY MOUNTAIN
ELEVATOR PRODUCTS
LIVING



FIXTURES

CUSTOM CAR OPERATOR PANELS (COP) IN OIL RUBBED BRONZE, BRASS OR STAINLESS.

STANDARD

UPGRADES



LIMIT THE USE OR ACCESS TO FLOORS
WITH DIGITAL AND PHYSICAL KEYS.
AVAILABLE IN OIL RUBBED BRONZE,
BRASS OR STAINLESS FINISH. (KEYPAD
AVAILABLE IN BLACK ONLY)



HALL POSITION INDICATOR
SHOWS WHAT FLOOR THE CAB
IS AT IN A GLANCE ON THE HALL
STATION.

ENHANCE YOUR COP WITH
LED HALO COLORS!

STANDARD

UPGRADES



WHITE

BLUE, RED, GREEN

COP STYLES; STANDARD,
GOTHIC, VICTORIAN, VINTAGE,
AND ROUNDED.
HANDS FREE PHONE
UPGRADE ALSO AVAILABLE.

ROCKY MOUNTAIN
ELEVATOR PRODUCTS



HANDRAILS AND SILLS

- STYLES AND COLORS TO MATCH OR ACCENT YOUR HOME ELEVATOR.
- FLAT HARDWOOD HANDRAILS ARE AVAILABLE IN THE SAME SELECTION OF HARDWOOD AS YOUR CAB.
- FLAT HANDRAILS ARE ALSO AVAILABLE IN BRUSHED STAINLESS STEEL, CLEAR MILL ALUMINUM, BRUSHED BRASS AND OIL-RUBBED BRONZE.
- ROUND METAL HANDRAIL AVAILABLE IN BRUSHED STAINLESS STEEL, CLEAR MILL ALUMINUM, BRUSHED BRASS AND OIL-RUBBED BRONZE.
- SILLS ARE EXTRUDED ALUMINUM WITH ANODIZED FINISHES IN CLEAR, BRONZE AND BRASS AND ARE STOCKED IN 8 FT LENGTHS.



UNFINISHED HANDLE



CEILING



- BASIC CABS ARE INSTALLED WITH STANDARD TWO LIGHT FLAT PANEL CEILINGS.
- PANELS ARE AVAILABLE IN ALL FINISHES TO MATCH YOUR CAB STYLE OR RAW TO BE STAINED WITH YOUR HOME.
- WROUGHT IRON DESIGN CAN BE SUPPLIED BY CUSTOMER TO MATCH HOME ACCESSORIES.

STANDARD FLAT PANEL
WITH 4 LIGHTS



FOUR TRAY WITH
CROWN MOLDING



BUILDER SERIES CEILINGS

UPGRADE YOUR STANDARD CAB DESIGN WITH AN UPGRADE CEILING FROM OUR BUILDER SERIES CATALOG.

CHOOSE TO UPGRADE TO 4 LIGHTS (TWO ARE STANDARD) AND THEN PICK A STYLE TO MATCH YOUR CAB AND

CUSTOM WROUGHT IRON
(MAY VARY, YOU CAN SUPPLY)



SINGLE TRAY WITH
STANDARD TWO LIGHTS



CUSTOMIZE YOUR CEILING WITH YOUR CUSTOMIZED CAB. RECESSED PUCK LIGHTS, WIRE MESH, AND GLASS ARE SOME OF THE OPTIONS YOU CAN HAVE.

MESH*



GLASS*



* SHOWN AS EXAMPLES, DESIGN YOUR CABS CEILING YOUR WAY TO FIT YOUR STYLE AND HOME.

ROCKY MOUNTAIN
ELEVATOR PRODUCTS
LIVE LIFE ELEVATED



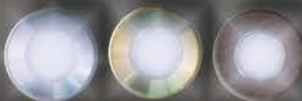
LIGHTING



STANDARD 3" LED LIGHTS

- UPGRADE YOUR INTERIOR WITH LIGHTING ACCENTS. CHOOSE FROM A VARIETY OF LOW POWER WHITE LED AND OPTIC PANELS.
- STANDARD 3" LED LIGHTS AVAILABLE IN BLACK, WHITE, AND STAINLESS.

STAINLESS BRASS DARK WOOD



1" HIGH OUTPUT DOT LIGHTS

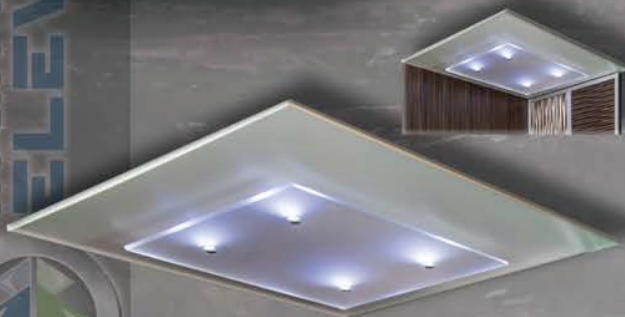


SILVER, WHITE, BRONZE, BLACK
4" LED LIGHTS



FLAT OPTIC PANEL

CURVED OPTIC PANEL



ROCKY MOUNTAIN
ELEVATOR PRODUCTS
LIVE LIFE ELEVATED



GATE OPTIONS

WRAP AROUND CAR GATE

SAFE & SECURE

- MINIMIZES SPACE BETWEEN HOISTWAY AND DOOR, REDUCING THE RISK OF CHILD ENTRAPMENT.
- RIGID PANELS ELIMINATE BOWING THAT IS COMMON WITH ACCORDION GATES.
- GATE SITS FLUSH WITH FRONT OF CAR.

CUSTOMIZABLE

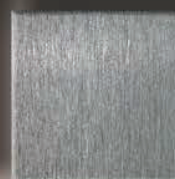
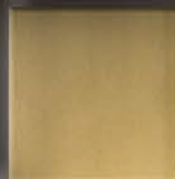
- MULTIPLE STANDARD LAMINATES AND NATURAL WOOD PANELS AVAILABLE.
- HIDDEN HARDWARE MAINTAINS SLEEK FRAME DESIGN.
- PANELS CAN BE CUSTOMIZED TO MATCH YOUR HOME DECOR.
- CUSTOM R.A.L. COLORS AVAILABLE.
- CHOOSE BETWEEN AUTOMATIC OR MANUAL OPERATION.

NICKEL *

BRONZE *

BRASS *

H4 STAINLESS *



* ALUMINUM ANODIZED FINISH



ROCKY MOUNTAIN
ELEVATOR PRODUCTS
LIVE LIFE ELEV



CHOOSE FROM THE SAME SELECTIONS AVAILABLE FOR CAB
FINISH AND HARDWARE.

LAMINATES



MESH AND ACRYLIC

LIGHT WEIGHT
WOVEN
WIRE MESH

GREY TINT
ACRYLIC

CLEAR
ACRYLIC

BRONZE TINT
ACRYLIC

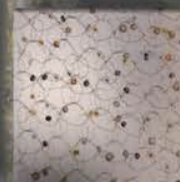
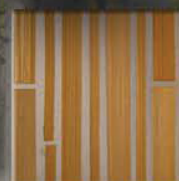
DESIGNER INLAYED ACRYLIC

AVAILABLE IN SANDSTONE AND PATINA FINISHES.

FOSSIL
LEAF

BAMBOO

THATCH



PONDER

JUTE

ASHA

VENEERS



PREMIER PANELS

AVAILABLE IN THE HARDWOOD AND
LAMINATE SELECTIONS.

WRAP GATE PANEL

WRAP GATE SPECIES EXAMPLES



RMEP 3 SPEED GATE

- 3 SYNCHRONIZED PANELS.
- 34" CLEAR OPENING ON A 36" CAR WITH A 10.5" POCKET SPACE.
- TAKES 4.5" DEPTH (STANDARD SILL) AND STACKS 12.75" WHEN OPEN.

FRAMELESS



AVAILABLE IN FRAMED AND FRAME-LESS. INSERT WOOD PANELS, PLEXI, MESH, OR GLASS INTO THE FRAMES.



FRAMED



CLOSED



OPEN

ROCKY MOUNTAIN
ELEVATOR PROD.



TWO AND THREE SPEED GATES

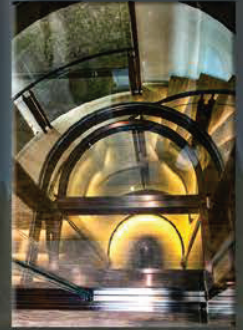


- TWO AND THREE SPEED GATES.
- MOST SIZES AVAILABLE IN FIRE RATED IF REQUIRED.
- STAINLESS STEEL IS STANDARD, CUSTOMIZABLE ON REQUEST.



ROCKY MOUNTAIN
ELEVATOR PRODUCTS

LIVE LIFE ELEVATED



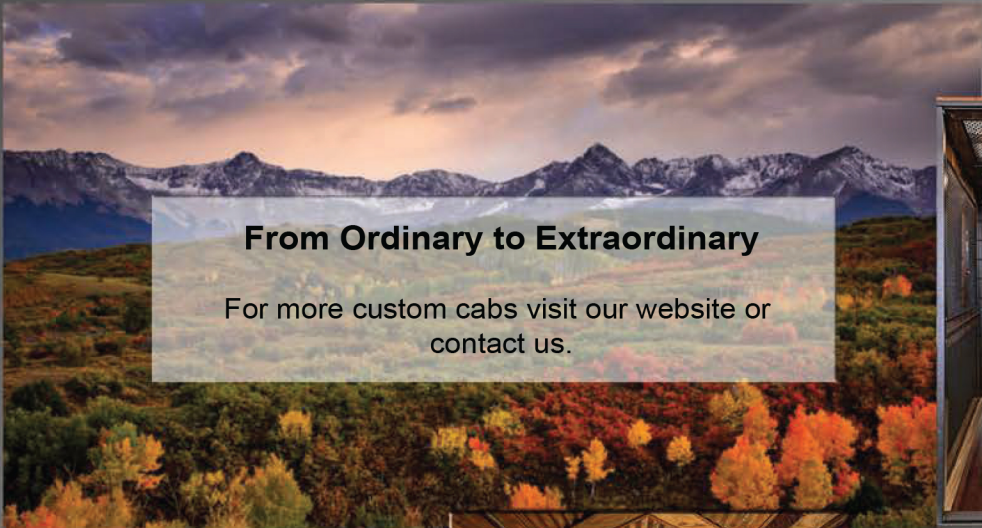
As Solid As The Rockies



ROCKY MOUNTAIN
ELEVATOR PRODUCTS
LIVE LIFE ELEVATED

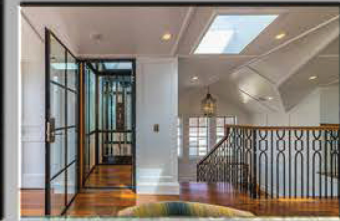
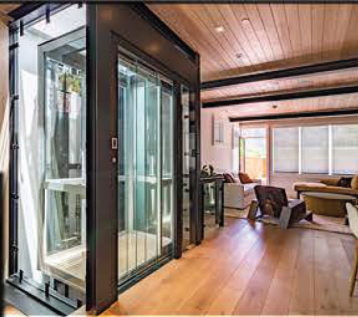
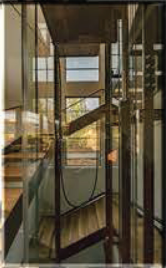


Scan for more information



From Ordinary to Extraordinary

For more custom cabs visit our website or
contact us.



ROCKY MOUNTAIN
ELEVATOR PRODUCTS
LIVE LIFE ELEVATED

