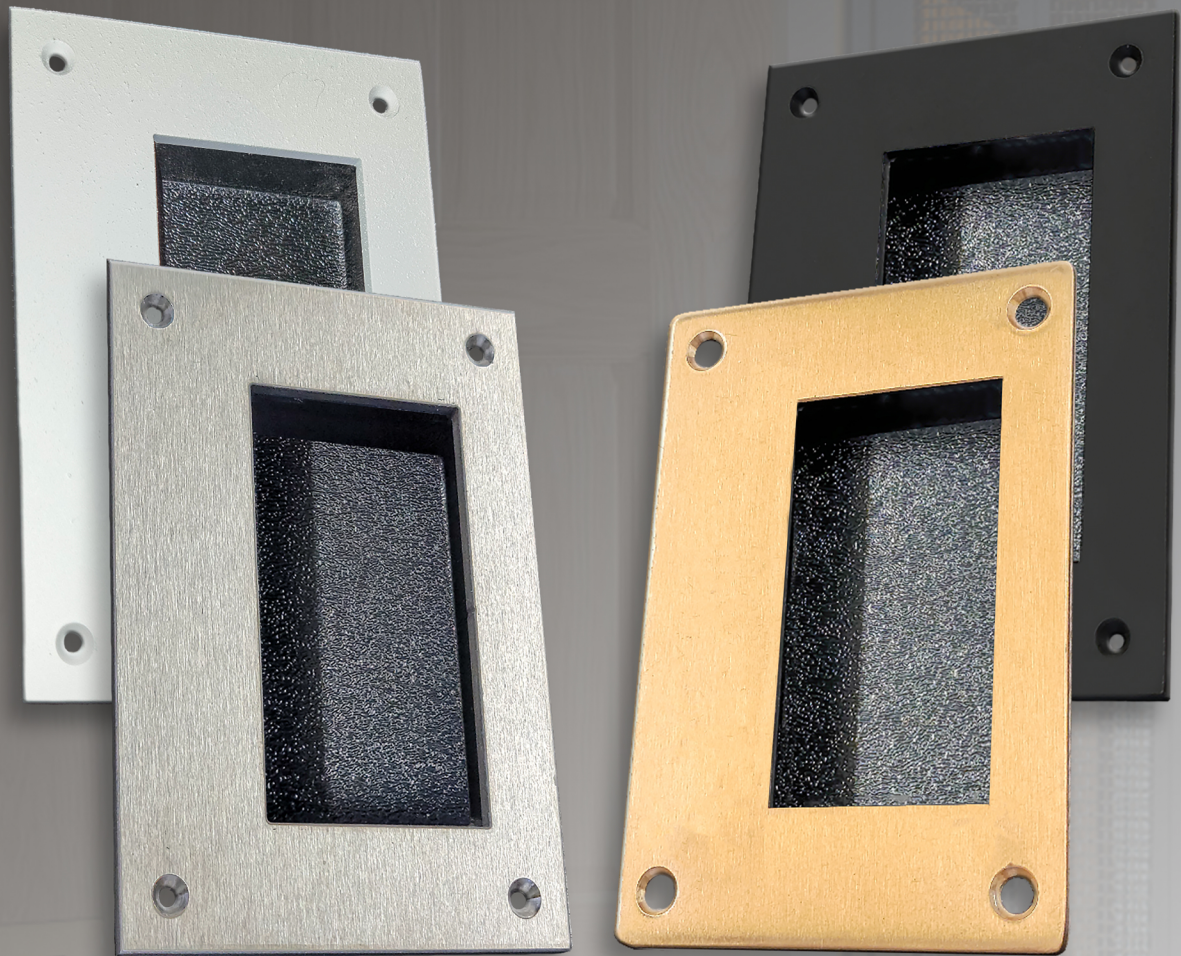


RMEP DOOR PULLS ZERO INCH & 3/4" CLEARANCE COMPLIANCE

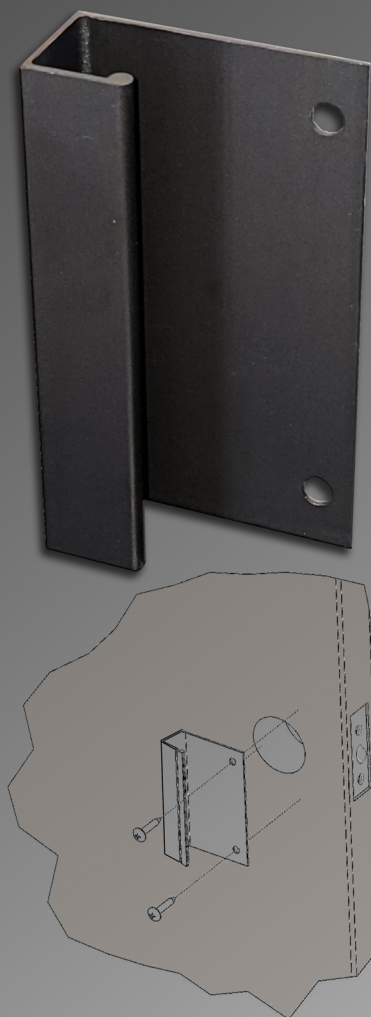
ROCKY MOUNTAIN
ELEVATOR PRODUCTS
LIVE LIFE ELEVATED



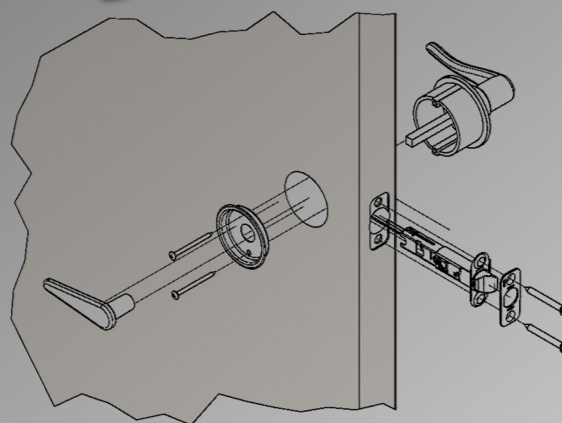
- NEAR FLUSH MOUNTING 1/8" DOES NOT INTRUDE INTO HOIST WAY.
- RECESSED POCKET DESIGN.
- 5/8" POCKET
- 3-1/2" WIDE X 4-7/8" TALL X 1-1/8" THICK FACEPLATE
- FINISHES AVAILABLE:
 - BLACK
 - WHITE
 - BRASS
 - STAINLESS STEEL



RMEP DOOR PULL AND TURN HANDLE, 3/4" CLEARANCE COMPLIANCE



*J-HANDLE DOOR PULL FOR USE WITH BALL CATCH ONLY.



*LOW PROFILE TURN HANDLE FOR USE WITH 5/16" X 5/16" SPINDLE SIZE LATCHES. SEE INSTALLATION MANUAL FOR MORE DETAILS.

- LOW PROFILE DOES NOT INTRUDE PAST THE 3/4" JAMB.
- TURN HANDLE KIT COMPATIBLE WITH MOST SCHLAGE LATCHES.
- J-HANDLE COVERS LATCH HOLE AND ALLOWS A DUMMY HANDLE TO BE INSTALLED ON THE HALL SIDE OF THE HOIST WAY DOOR.
- J-HANDLE FINISHES AVAILABLE:
 - #4 BRUSHED
 - OIL RUBBED BRONZE
- TURN HANDLE FINISHES AVAILABLE:
 - STAINLESS STEEL
 - OIL RUBBED BRONZE



**CONTACT RMEP FOR MORE INFORMATION ON PROPER APPLICATION USAGE.

ROCKY MOUNTAIN
ELEVATOR PRODUCTS
LIVE LIFE ELEVATED

